

Erratum

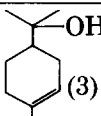
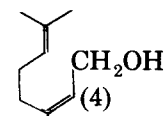
Polymers from Renewable Sources III Hydroxy-Terminated Myrcene Polymers

J. L. CAWSE, J. L. STANFORD, and R. H. STILL, *Wolfson Polymer Research Unit, Department of Polymer Science and Technology, U.M.I.S.T., P.O. Box 88, Manchester, United Kingdom*

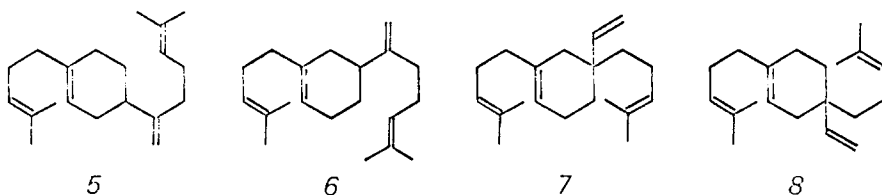
[article in *J. Appl. Polym. Sci.*, 31, 1963–1975 (1986)]

Due to a production error, the following author corrections were not included in the above article.

Page	Line	Reads:	Should Read:
1963	26	β -Myrcene ¹	β -Myrcene (1)
	29	byproduct	by-product
1965	7	reextracted	re-extracted
	12	$\bar{E}n$)	($\bar{E}n$)
	16	Sytragel	Styragel
	28	multiple integration ⁵	multiple integration (5)
	38	temperatrue	temperature
	41	product	produce
1966	12	:	.
1967	12	the spectrum was shaken with D ₂ O	the spectrum was re-run after the solution was shaken with D ₂ O (line left out)
		Table II	all H atoms should be joined to bonds
1968	9	negligible	negligible
	10	expression	expressions
	14	1.6—1.65	1.6, 1.65
1969	21	negligble	negligible
1970	2	workup	work-up
	5	systetms	systems
	6	descrepancy	discrepancy
	15	geraniumlike	geranium-like
	20	$\bar{F}n$	fn
	20	geraniol ² , terpineol ³ nerol ⁴	geraniol (2) terpineol (3) nerol (4)

Page	Line	Reads:	Should Read:	
1970	20	Structure 3 (incorrect)	 (3)	 (4)
	25	Structure 4 (incorrect)		
		dimers ⁵⁻⁸	dimers (5-8)	
		Fig 5 caption		
		(-) extraction	(---) extraction	
		workup	work-up	
1972	3	althouth	although	
	4	ARCO	Arco	
1973	30	(-60°C - 50°C)	(-60°C-- 50°C)	
1974	3	form	from	
	9	:	.	
	14	certain	certain	
		Table V		
		200	~ 200	
		1000	~ 1000	
		4000	~ 4000	
		α - Pinene	α -Pinene (BDH)	
		(BDH)		
		Very vis cous	Very viscous pale yellow liquid.	
		pale yellow liquid		
1976	4	byproducts	by-products	

Correct Structures 5-8:



Correct Table IV:

TABLE IV
Polymyrcene: Molecular Weights and Functionalities

Polymer	[H ₂ O ₂] % w/w	Equiv. wt.	\bar{M}_n (VPO)	\bar{f}_n	\bar{M}_n	\bar{M}_w	\bar{M}_w/\bar{M}_n (GPC)	\bar{f}_n
A1	0.5	3185	4030	1.26	4140	5600	1.35	1.30
A2	1.0	2255	3410	1.51	3410	4600	1.35	1.51
A3	1.9	1906	3270	1.72	3010	3990	1.33	1.58
A4	3.6	1626	3750	2.30	3470	4600	1.32	2.14
A5	5.4	1345	3100	2.30	3120	4130	1.33	2.32
B1	2.8	1322	2110	1.60	2950	4100	1.39	2.23
B2	2.8	1412	2080	1.47	2810	3850	1.37	1.99